

## REMAX ENERGY

### Sanitary Check Valve

#### Model: RSCV03

### Description

A **check valve**, or non return valve, is a valve that prevents the fluid from flowing backwards and ensures that it flows in only one direction. It can be used to prevent the loss of prime of the pump and water hammer.

The **check valve** opens when the pressure of the fluid exceeds the pressure exerted by the spring. When the two pressures are compensated, the valve closes. A higher counterpressure will ensure the valve closes. When there are two pumps operating alternately, the check valves are installed at the outlet of each pump to prevent the backflow when the pump is stopped. The obturation disc is provided with a perforation for a minimal circulation flow to avoid water stagnancy.

It is used in the food-processing, cosmetics, pharmaceutical and chemical industries as well as in the beverage, wine and oil production.



### Design Features

**Title:** Check Valve

**Main Materials:** SS304 / SS316 / SS316L

**Pressure Rating:** 12 bar

**Temperature Rating:** -30°C to 150°C

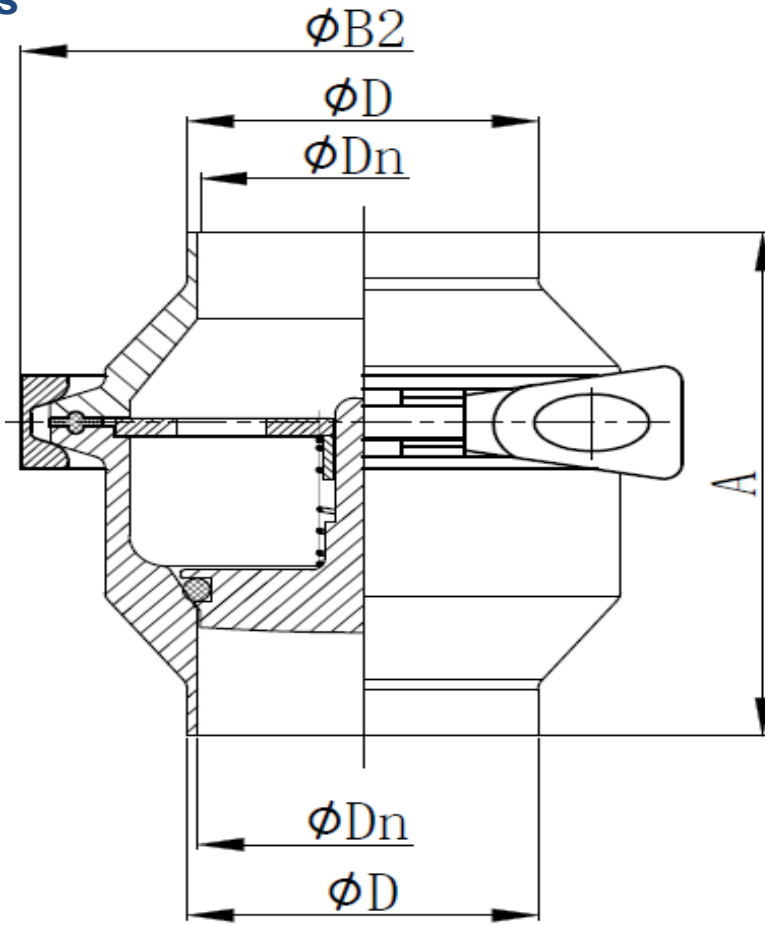
**Size Range:** 1/2" - 4" (DN15-DN100mm)

**Application:** Food & Beverage, Water & Waste water, Ultra Pure Water, Desalination, Chemical, Textile, Pharmaceutical, Pulp & Paper, Mining, Boiler and Power Industries

**Connection:** Screwed Type: Clamped – Buttweld

**Surface finish Ra:** standard 0.8 / other on request

## Dimensions



Size	A (mm)	B2 (mm)	D (mm)	Dn (mm)
1/2"	70	56.5	12.7	9.4
3/4"	70	56.5	19.05	15.8
1"	70	76.5	25.4	22.1
1 1/2"	70	87	38.1	34.8
2"	80	100	50.8	47.5
2 1/2"	90	115	63.5	60.2
3"	100	128	76.2	72.9
4"	106	164	101.6	97.4

## Material Table

Part	Material
Body	AISI 304 / AISI 316 / AISI 316L
Seal ring	EPDM / silicone / NBR / viton
O ring	EPDM / NBR / viton
Spring	AISI 316L

## Pressure drop/Capacity diagram

